

RCI Overview

Riverside Center for Innovation (RCI) helps pre-venture, startup, and existing businesses acquire the tools needed to overcome barriers that may impede growth for small, diverse businesses.

RCI is located on the North Side of Pittsburgh and rents below-market office space to small businesses in addition to running the programs we'll be discussing today.



RIVERSIDE
CENTER FOR
INNOVATION

For more information, contact:

Juan Garrett

Executive Director

jg@riversidecenterforinnovation.com

412-322-3523

Please email for a much quicker response

For more information, visit

riversidecenterforinnovation.com

RCI Programming

- **Business Analysis of DBE firms**
- **Diversity Business Resource Center**
- **Entrepreneurial Training BizFIT / REEF**
- **Reed Smith Pro Bono Legal Services**
- **Access to Capital - Kiva Pgh/CBLI - Dollar Bank**
- **Boost Your Business Series**
- **CoLab18 @ Nova Place**

- **Created over 5,000 jobs**
 - **Generated over \$204 million in annual output.**
 - **\$94 million annual wages**
 - **\$24.8 million in total tax revenues**
 - **3 out of 4 of BizFIT clients are profitable**
-

A large, multi-story brick building is the central focus, showing signs of renovation. The ground floor features colorful murals and is partially covered with green and yellow protective sheeting. A sign with the word 'POWER' is visible on the left side of the ground floor. The upper floors have many windows, some of which are boarded up. To the right, a smaller, older brick building with a gabled roof and dormer windows is visible. The sky is blue with light clouds. In the foreground, there are parked cars and a person walking on the sidewalk.

New Granada Square

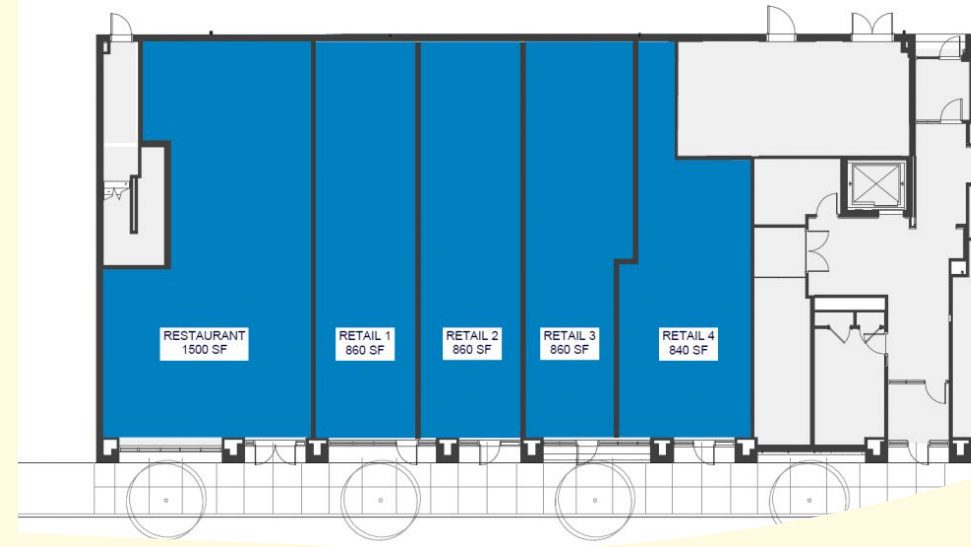
an EPA Region Project

About the Project

The New Granada Square is a mixed-use redevelopment of most of the city block that includes the historic New Granada on Centre Avenue in the heart of the historic Hill District.

Separate projects make up the development including artists apartments, cultural/performance space, commercial/retail spaces, restaurants and offices.





The Plan

The New Granada Square Apartments is being co-developed by the Hill CDC and CHN Housing Partners to be 24 one-bedroom apartments and 16 two-bedroom apartments.

The housing will be targeted for artists who have connections to the African-American community. The first floor will have five spaces that combine for a total of 5,000 sq. ft., including a 1,500 sq. ft. restaurant.

Building Community

The historic New Granada building and offices have as an anchor tenant the University of Pittsburgh's Community Engagement Center. This 20,000 SF space will allow the University to interact in a more impactful way with the Hill District residents.

The new construction on the western side (left side in the image) of the historic structure will have a full-service restaurant on the lower floor next to the public plaza and will have office space located above. Finally, and not least of all is a rooftop dining and viewing deck.



Creating a Lasting Impact

The second floor of the historic structure 40,000 square foot building will be restored as a flexible event hall that will easily accommodate over 900 attendees for performances, as well as a spectacular venue for special and corporate events. The first floor of the historic building will include both a food hall offering multiple cuisines and a community event space that will accommodate approximately 100 people.

"The historic New Granada is arguably the most important development that the Hill District has seen. It's going to bring jobs, it's going to bring culture and put it front and center, not just for the Hill District but for the entire region," said Marimba Milliones, the president and CEO of Hill Community Development Corporation."



A GRAND OPEN HOUSE

ROXIAN THEATRE



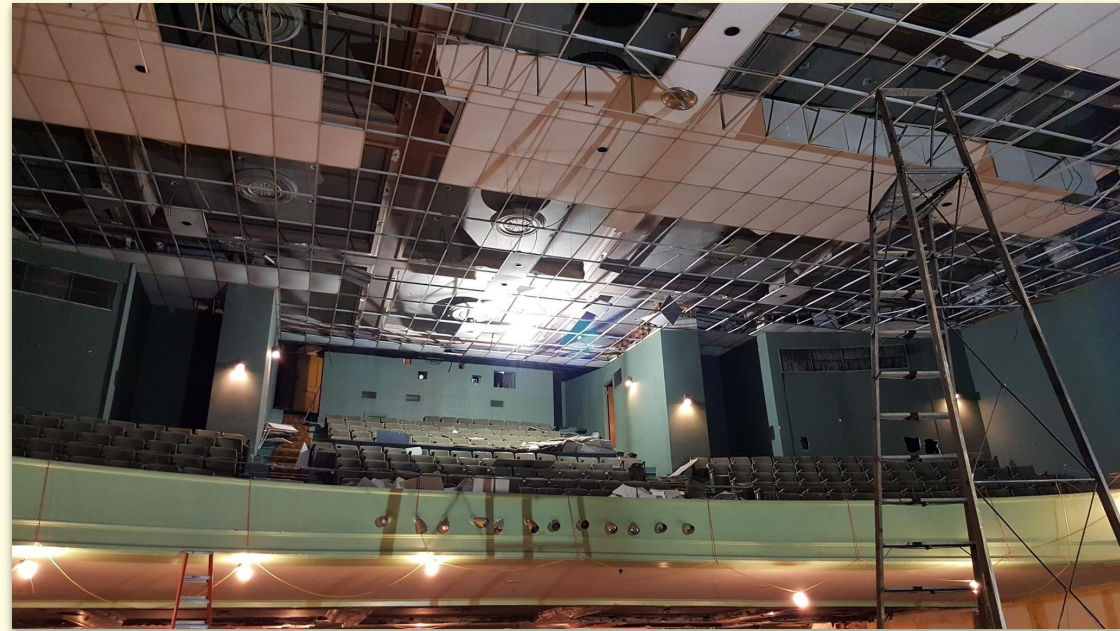


2012: the North Side Industrial Development Company utilized \$11,000 from its EPA Brownfields assessment grant to conduct a phase I environmental site assessment and asbestos inspection to assist the McKees Rocks Community Development Corporation (MRCDC).

The historic Roxian Theatre in McKees Rocks, PA celebrated a grand reopening on May 10, the date celebrated the 90th anniversary of the venue's original opening in 1929 as a vaudeville theater.



The Roxian Theater offers local musicians and touring acts a venue within the 800 to 1,500 seat range, which is difficult to find in the greater Pittsburgh area.



Vacant since 2003, the Roxian Theater reopening was anticipated to usher in a new era of vibrancy to the downtown business district of this EJ community, in conjunction with a recent \$1.9 million PennDOT first phase streetscape grant.



ROXIAN
THEATRE
LOFTY VIEW
DAVID HEATH



ROXIAN
THEATRE
*LOFTY VIEWS
DAVID HEATH*