

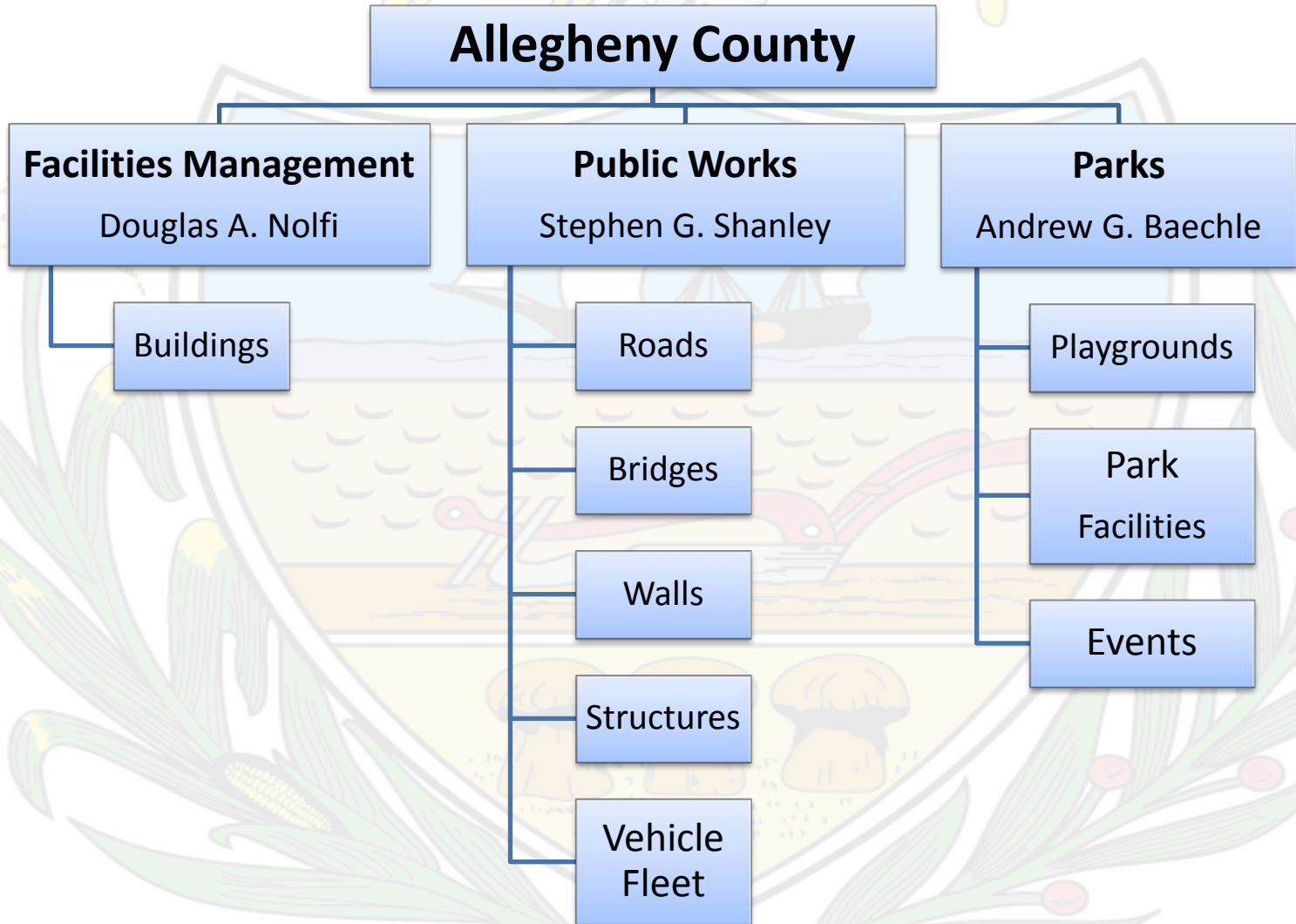
A photograph of the Pittsburgh-Butte Ridge Bridge, a yellow steel arch bridge, viewed from the perspective of someone standing on the bridge looking towards the city skyline. The bridge's yellow steel structure, including the arch and railings, is prominent in the foreground and middle ground. In the background, the Pittsburgh skyline is visible under a blue sky with light clouds. Notable buildings include the PPG Place (a tall, blue glass skyscraper on the right) and the Freedom Tower (a dark, multi-story building with a large archway in the center). Other smaller buildings and a crowd of people walking on the bridge are also visible.

Allegheny County

Department of Public Works

Director – Stephen G. Shanley, P.E.

Allegheny County Organization





Allegheny County Statistics

Allegheny County is the 2nd largest county in Pennsylvania, and home to 130 municipalities, including the City of Pittsburgh.

Allegheny County owns and maintains:

- 557 Bridges
- 408 miles of Roads
- Fleet of 720 maintenance, administrative, and police vehicles
- 9 County parks consisting of over twelve thousand acres of park land
- 130 Buildings consisting of approximately three million square feet of building space



Allegheny County

Professional Services Contracts

- Open-ended contracts
 - Bridges, Roads, Geotechnical, Traffic, CM/CI, ROW Acquisition/ Appraisal, Small Bridge Inspections
- Small Bridge Design Groups
 - 3-4 Bridges
- Large Project Design Contracts
 - Federally-funded road and bridge Projects
- Construction Management and Inspection Contracts
 - Federally-funded road and bridge Projects

Allegheny County

Bridge Project Funding

- County Funded
 - 100% County



- State funded
 - 80% State
 - 20% County



- Federally Funded
 - 80% Federal
 - 15% State
 - 5% County

Allegheny County

Roads Project Funding

- In-house Paving Program

- Area Repairs and Mill & Pave
- 100% County
(Liquid Fuels Funds)



- Capital Construction

- 100% County



- Federally Funded

- 80% Federal
- 20% County

Allegheny County

Walls and Structures Project Funding

Walls and structures are 100% funded by the county.



Allegheny County Department of Public Works

Tentative Upcoming Roads Construction Projects

1. 2016 Capital Roads
2. Thoms Run Road Realignment, Early 2016
3. Middle Road Betterment, Mid 2016
4. Neville Island Bike Lanes, Mid 2016

Allegheny County Department of Public Works

Tentative Upcoming Bridge Construction Projects

1. 2016 Capital Bridges, February 2016
 - Deer Creek W. Bridge No. 1 [DW01]
 - Lick's Run Bridge No. 14 [LC14]
 - McClaren's Run No. 4 [MC04]
 - Pangburn Hollow Bridge No. 8 [PG08]
 - Ryan's Run Bridge No. 2 [RY02]
2. Pine Creek No. 11 [PI11], February 2016
3. Philip Murray (South 10th St) Bridge [MA11] Phase II, Early 2016
4. Montour Run No. 1 [MN01], Early 2016
5. Andy Warhol (7th St) Bridge [AL03], Early/Mid 2016



2016 Capital Bridges

February 2016

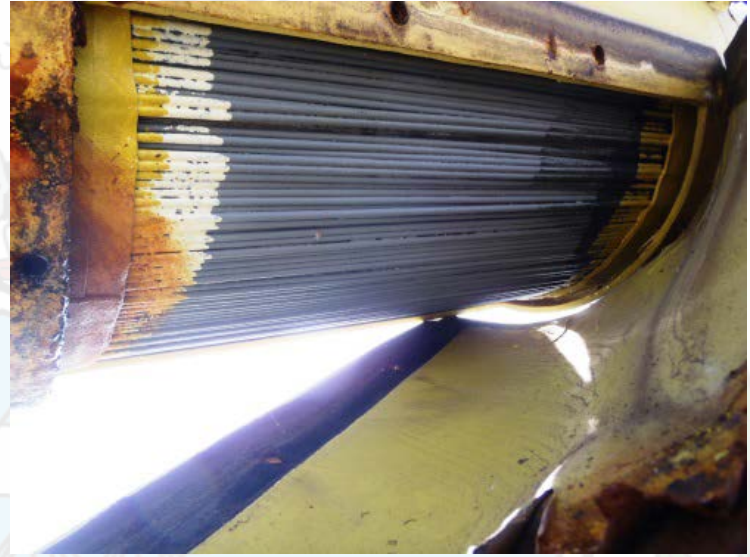
Repair and Replacement of various County-owned bridges



PI11 Pine Creek Bridge No. 11

February 2016

Complete replacement, Composite adjacent box beam superstructure on a drilled caisson foundation.



MA11 Philip Murray (South 10th St) Bridge

Early 2016

Steel Repairs, Concrete Repairs, Deck overlay, Painting, Cable and Anchorage vault Dehumidification.



MN01 Montour Run No. 1

Early 2016

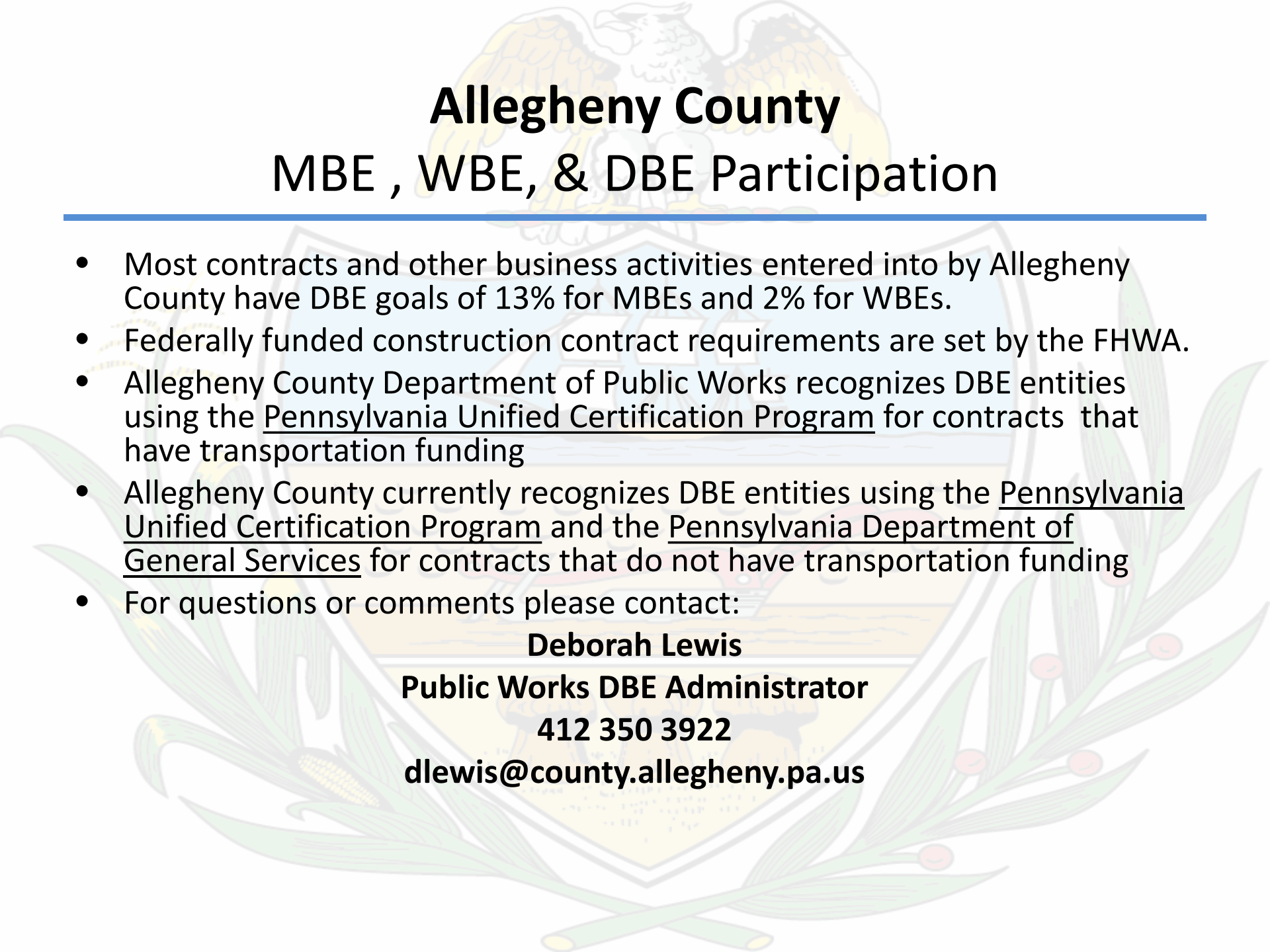
Superstructure replacement with substructure repairs



AL03 Andy Warhol (7th St) Bridge

Early/Mid 2016

Steel Repairs, Painting, Concrete Repairs, Deck Replacement

The background of the slide features a large, faint watermark of the Allegheny County Seal. The seal depicts an eagle with spread wings perched atop a shield, which is flanked by olive and arrow branches. The shield contains a landscape with a river and mountains.

Allegheny County

MBE , WBE, & DBE Participation

- Most contracts and other business activities entered into by Allegheny County have DBE goals of 13% for MBEs and 2% for WBEs.
- Federally funded construction contract requirements are set by the FHWA.
- Allegheny County Department of Public Works recognizes DBE entities using the Pennsylvania Unified Certification Program for contracts that have transportation funding
- Allegheny County currently recognizes DBE entities using the Pennsylvania Unified Certification Program and the Pennsylvania Department of General Services for contracts that do not have transportation funding
- For questions or comments please contact:

Deborah Lewis
Public Works DBE Administrator
412 350 3922
dlewis@county.allegheny.pa.us



Allegheny County Advertising

- All projects are advertised in the Pittsburgh Courier.
- All projects advertised on the County website at the link below:
- <http://www.alleghenycounty.us/publicworks/bids/index.aspx>
- All state and federally funded projects are advertised on the PennDOT Engineering and Construction Management System (ECMS).



Allegheny County

Consultant Selection Services

- County Guidelines for Consultant Selections can be found on the County website at the link below:
- http://www.alleghenycounty.us/uploadedFiles/publicworks/ConsultantServicesGuidelines_April2015.pdf
- Allegheny County follows PennDOT publications 740 and 93 for consultant selection

The background of the slide features a large, faint watermark of the Seal of the Commonwealth of Massachusetts. The seal consists of a shield with a blue upper section containing a white sailing ship, a yellow middle section with a blue fish, and a yellow lower section with three brown sheaves of wheat. Above the shield is a bald eagle with yellow and white feathers, perched on a scroll. The shield is flanked by green leaves and a yellow cornucopia on the left, and a green olive branch with red berries on the right.

Questions or Comments